

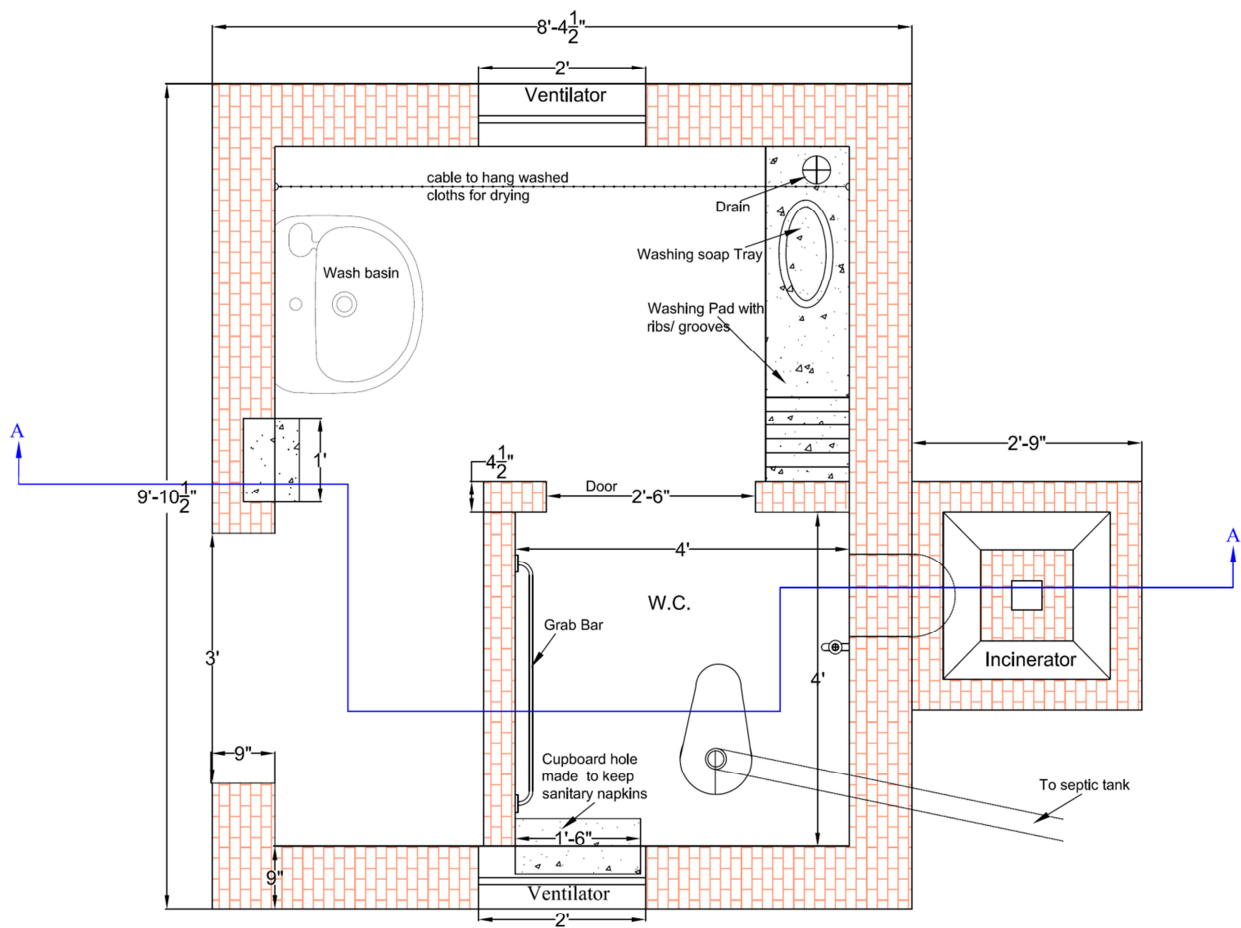
Technical guidelines for building the girls' friendly toilet in schools

Toilet design for girls needs special attention. Please consider the issues around privacy, dignity and desirable components of the toilet structure for effective menstrual hygiene management at the school level. This technical brief is for the single unit of the toilet with incinerator to address the issues around menstrual hygiene management in schools. It can be modified according to the local environment and needs.

- ☑ Before construction, give a considerable attention to the selection of the site of the toilet. Always share and discuss your plans with the school teachers, girl students and maintenance staff before starting the construction. If required and appropriate change any component of your initial designs as per local requirements.
- ☑ Make sure that the toilet block site is easily accessible and have an appropriate level of privacy.
- ☑ There must be a child accessible cupboard or niche in the wall of the storage of new sanitary napkins.
- ☑ There must be a connection/ chute to an external safe disposal point ideally an incinerator so that soiled napkins can be incinerated /safely disposed. Orientation must be given to the concerned on O&M of the incinerator.
- ☑ Provision of an internal hand wash is desirable from hygiene perspective. This must be separate from the tap located near the toilet seat.
- ☑ Ventilators must be located in a way that the natural light and ventilation naturally keeps the space dry. It is also desirable to keep the ventilators away from the incinerator chimney.
- ☑ It should be ensured that there is no stagnant water or dampness on floor slope.
- ☑ It is also desirable to provide a washing pad along with a cloth hanging rope to dry the washed sanitary cloths.
- ☑ Provision of hand washing soap is must in the toilet block at hand washing place.
- ☑ Ensure that there is a sustainable and continuous water supply available in the toilet block.
- ☑ If there is a need provide components for easy access during construction depending on the needs. It can be a ramp at the entrance, grab bars near toilet seats, guide ways for wheel chair etc.
- ☑ The foundation and floor details given in the drawings here are only indicative and may need review/ modification according to local site conditions.
- ☑ The Toilet outlet must be connected to a septic tank or a centralized sewage disposal system if present in the area.

- Provide soak pit to drain off the waste water from washing area and wash basin, if there is no municipal drainage system available in the area.
- To get a more detailed view on the matter please read *Menstrual hygiene matters* by Sarah House, Thérèse Mahon and Sue Cavill. Available at: <http://www.wateraid.org>

For more information contact: Muhammad Naveed- Technical Coordinator WASH,
Water Aid in Pakistan.Email: NaveedMuhammad@wateraid.org



PLAN - Typical Girls Friendly Toilet for Schools

